

**EBACE2019 CONTACTS & OFFICIAL SERVICE PARTNERS**

**OFFICIAL SERVICE PARTNER LOGO:**

Exhibitors should look for the official service partner logo on all service partner forms to ensure they are working with a show approved service partner.



**EBACE U.S.A. OFFICE, NBAA**

1200 G Street NW, Suite 1100  
Washington, DC 20005 USA  
Tel: +1 (202) 783-9000  
Email: [exhibits@ebace.aero](mailto:exhibits@ebace.aero)  
Website: [www.ebace.aero](http://www.ebace.aero)

**MEETING ROOMS**



Chris Cherkis  
Tel: +1 (202) 478-7779  
Mobile: +1 (202) 415-1269  
Email: [ccherkis@nbaa.org](mailto:ccherkis@nbaa.org)

**INDOOR EXHIBITS**



**Exhibitors, 180 sqm+**  
Maureen Cameron  
Tel: +1 (202) 783-9453  
Mobile: +1 (202) 203-0609  
Email: [mcameron@nbaa.org](mailto:mcameron@nbaa.org)



**STATIC DISPLAY**  
Tracy Tippet  
Tel: +1 (202) 478-7767  
Mobile: +1 (202) 415-1247  
Email: [ttippet@nbaa.org](mailto:ttippet@nbaa.org)



**Exhibitors**  
Julie Stubbs  
Tel: +1 (202) 783-9289  
Mobile: +1 (202) 802-0318  
Email: [jstubbs@nbaa.org](mailto:jstubbs@nbaa.org)



Joe Hart  
Tel: +1 (202) 783-9456  
Mobile: +1 (202) 415-1219  
Email: [jhart@nbaa.org](mailto:jhart@nbaa.org)

**ADVERTISING & SPONSORSHIPS**



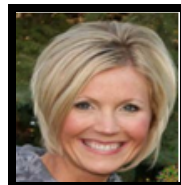
**Exhibitors**  
Sarah Driver  
Tel: +1 (202) 783-9369  
Mobile: +1 (202) 909-5941  
Email: [sdriver@nbaa.org](mailto:sdriver@nbaa.org)



Rhonda Bowman  
Tel: (202) 478-7774  
Mobile: (202) 360-7528  
Email: [rbowman@nbaa.org](mailto:rbowman@nbaa.org)



**Exhibitors, Airframe Manufacturers**  
Linda Peters  
Tel: +1 (202) 783-9368  
Mobile: +1 (202) 415-1297  
Email: [lpeters@nbaa.org](mailto:lpeters@nbaa.org)



Amanda Dumont  
Mobile: +1 (864) 373-1168  
Email: [adumont@idc.nbaa.org](mailto:adumont@idc.nbaa.org)



21-23 MAY 2019 | GENEVA

## PRESS INQUIRIES



**NBAA:** Dan Hubbard  
Tel: +1 (202) 783-9360  
Mobile: +1 (202) 431-5970  
Email: [dhubbard@nbaa.org](mailto:dhubbard@nbaa.org)

## GENERAL INFORMATION



Richelle Adams  
Tel: +1 (202) 280-6341  
Mobile: +1 (202) 868-0448  
Email: [radams@nbaa.org](mailto:radams@nbaa.org)

## PRESS INQUIRIES



**EBAA:** Roman Kok  
Tel: +32 488 39 19 79  
Mobile: +32 478 406 007  
Email: [rkok@ebaa.org](mailto:rkok@ebaa.org)

## EBACE EUROPE OFFICE, EUROPEAN BUSINESS AVIATION ASSOCIATION (EBAA)

Square de Meeûs 37  
BE-1000, Brussels, Belgium  
Tel: +32 2 766 0070  
Email: [events@ebaa.org](mailto:events@ebaa.org)

## PRESS CONFERENCES



Jessica Allston  
Tel: +1 (202) 783-9252  
Mobile: +1 (202) 868-1445  
Email: [jallston@nbaa.org](mailto:jallston@nbaa.org)

## EVENTS INFORMATION



Rachel Clementi  
Tel: +32 2-318-2809  
Email: [rclementi@ebaa.org](mailto:rclementi@ebaa.org)

## PUBLICATION BINS



Coryn Alvarez  
Tel: +1 (202) 737-4480  
Mobile: +1 (202) 740-4769  
Email: [calvarez@nbaa.org](mailto:calvarez@nbaa.org)

## EBAA MEMBERSHIP



Paul Walsh  
Tel: + 32 2-318-28-18  
Email: [pwalsh@ebaa.org](mailto:pwalsh@ebaa.org)

---

## REGISTRATION



Sierra Grimes  
Tel: +1 (202) 783-9268  
Mobile: +1 (202) 308-0793  
Email: [sgrimes@nbaa.org](mailto:sgrimes@nbaa.org)

## GENERAL CONTRACTOR

In order to assure orderly and efficient installation, decorating and removal of displays, EBACE has appointed Freeman, EMEA as the Official General Contractor for EBACE2019.



Dina Green  
Tel: +1 (202) 783-9357  
Mobile: +1 (202) 415-1315  
Email: [dgreen@nbaa.org](mailto:dgreen@nbaa.org)

## FREEMAN, EMEA – GENERAL CONTRACTOR (Shell-Scheme Stands, Carpet, Furniture & Accessories, Graphics and Labor)

## HOUSING & TRANSPORTATION



Cheryl Padilla  
Tel: +1 (202) 737-4484  
Mobile: +1 (202) 415-1208  
Email: [cpadilla@nbaa.org](mailto:cpadilla@nbaa.org)

## EBACE ACCOUNT MANAGER

Roxanne Ebbers  
Vice President, Client Solutions  
Tel: +1 (702) 579-1520  
Mobile: +1 (702) 491-7796  
Email: [Roxanne.Ebbers@freemanco.com](mailto:Roxanne.Ebbers@freemanco.com)



21-23 MAY 2019 | GENEVA

#### GENERAL CONTRACTOR

##### FREEMAN, EMEA – GENERAL CONTRACTOR CUSTOM EXHIBIT SALES

John Reed  
Business Development Director  
Tel: +1 (702) 579-1520  
Mobile: +1 (214) 876-7459  
Email: [John.reed@freemanxp.com](mailto:John.reed@freemanxp.com)

##### CUSTOM EXHIBIT SALES

Amelia Daduya  
Business Development Manager  
Tel: +1 (214) 445-1482  
Mobile: +1 (469) 693-3714  
Email: [amelia.rivera@freemanco.com](mailto:amelia.rivera@freemanco.com)

##### EXHIBITOR SERVICES

(Order confirmations/inquiries/billing)  
Tel: +44 (0) 2476 309 236  
Email: [EMEA.Exhibitorservices@freemanco.com](mailto:EMEA.Exhibitorservices@freemanco.com)

##### PALEXPO – EXHIBITION VENUE AND OFFICIAL/EXCLUSIVE SUPPLIER FOR TECHNICAL INSTALLATIONS (Electricity, Rigging and Internet)

Palexpo SA  
P.O. Box 112  
1218 Grand-Saconnex/Geneva  
Switzerland  
Tel: +41 (0) 22 761 11 11  
Website: [www.palexpo.ch](http://www.palexpo.ch)

##### OVERALL COORDINATION

Jerome Guillard  
Senior Sales & Key Account Manager  
Tel: +41 (0) 22 7761 11 11  
Email: [jerome.guillard@palexpo.ch](mailto:jerome.guillard@palexpo.ch)

##### TECHNICAL COORDINATOR / STATIC CALCULATIONS FOR CONSTRUCTION

Claudine Fischer  
Tel: +41 (0) 22 761 11 43  
Email: [claudine.fischer@palexpo.ch](mailto:claudine.fischer@palexpo.ch)

##### EXHIBITORS' CONTACT/ONLINE ORDERS

Sonia Arbesu  
Tel: +41 (0) 22 761 11 27  
Email: [sonia.arbesu@palexpo.ch](mailto:sonia.arbesu@palexpo.ch)

##### INTERNET CONNECTION / TELECOMMUNICATIONS

Tel: +41 (0) 22 761 12 34  
Email: [telematics@palexpo.ch](mailto:telematics@palexpo.ch)

##### AUDIO-VISUAL EQUIPMENT

Philippe Kuhn  
Tel: +41 (0) 22 761 1651  
Email: [philippe.kuhn@dorier.ch](mailto:philippe.kuhn@dorier.ch)

##### WHEELCHAIR RENTAL

PALEXPO  
First Aid  
Tel: +41 (0) 22 761 13 18

---

##### OFFICIAL FREIGHT FORWARDER/SHIPPING/TRANSPORTATION

##### TWI GROUP, INC

4480 S. Pecos Road  
Las Vegas, NV 89121, USA  
Tel: +1 (702) 691 90 00  
Website: [www.twiglobal.com](http://www.twiglobal.com)

##### PROJECT MANAGER, EBACE

Tyler Hunt  
Tel: +1 (702) 691-9091  
Email: [thunt@twigroup.com](mailto:thunt@twigroup.com)

---

##### OFFICIAL/EXCLUSIVE ON-SITE FREIGHT HANDLING/CUSTOMS BROKER

##### INTER EXPOLOGISTICS, LTD (IEL) ON-SITE FREIGHT HANDLING

Manuel Mazzini  
Email: [manuel.mazzini@iel.ch](mailto:manuel.mazzini@iel.ch)  
[info@iel.ch](mailto:info@iel.ch)

---

##### OFFICIAL/EXCLUSIVE CATERERS

##### PALEXPO RESTAURANTS

Rte François Peyrot 30  
1218 Grand-Saconnex/Geneva  
Switzerland  
Tel: +41 (0) 22 761 15 00



21-23 MAY 2019 | GENEVA

## PALEXPO RESTAURANTS

Angela Gautschi

Email: [angela.gautschi@palexpo.ch](mailto:angela.gautschi@palexpo.ch)

Email: [jlaubertel@palexpo.ch](mailto:jlaubertel@palexpo.ch)

Website: [www.palexpo.ch](http://www.palexpo.ch)

**Only Palexpo and their official partners are authorized to work on site.**

## FIRST AID

One first aid station will be available in the exhibit hall during move-in, move-out and on show days

Tel: +41 (0) 22 761 13 18

Internal call: 1318

---

## OFFICIAL LEAD RETRIEVAL PROVIDER

### eShow

Brandee Maier Netronix Corporation  
Senior Lead Retrieval Manager 5 Executive Court –  
Suite 2 South Barrington, IL 60010

Tel: +1 847 620 4200

Direct: +1 847 620 4499

Email: [leads@goeshow.com](mailto:leads@goeshow.com)

[brandee.maier@goeshow.com](mailto:brandee.maier@goeshow.com)

---

## PHOTOGRAPHER

### GLOBALVISION COMMUNICATION

Ch. J-Ph de Sauvage, 37

Jan-Mathieu Donnier

1219 Châtelaine/Geneva

Switzerland

Tel: + 41(0)22 796 90 76

Email: [info@globalvision.ch](mailto:info@globalvision.ch)

Website: [www.globalvision.ch](http://www.globalvision.ch)

---

## PLANTS AND FLOWERS

### GREEN ME 5

Gicquiau Guillaume

Chemin Vert 10

CH-1234 Vessy/Geneva

Switzerland

Tel: +41 (0) 79 798 72 12

Email: [info@greenme5.ch](mailto:info@greenme5.ch)

## SECURITY

### SECURITAS SA

Steve Mange

22, Avenue du Mail

1205 Geneva Switzerland

Tel: +41 (0) 22 809 48 48

Mobile: +41 (0) 79 509 17 22

Email: [services.speciaux@securitas.ch](mailto:services.speciaux@securitas.ch)

## TEMPORARY HELP

### KTNM CONCEPTS, SàRL

Katrin D. Niehaus

Tel: +41 (0) 22 787 05 77

Email: [info@ktnm.com](mailto:info@ktnm.com)

Website: [www.ktnm.com](http://www.ktnm.com)

---

## EXECUTIVE TRANSPORTATION

### GENEVA LIMOUSINE

107, route du Nant-d'Avril

CH- 1217 Meyrin

Tel: +41 (0) 22 719 85 60

Email: [infos@gvalimo.ch](mailto:infos@gvalimo.ch)

Website: [www.gvalimo.ch](http://www.gvalimo.ch)

---

## OFFICIAL HOUSING COMPANY

### MCI SUISSE SA

9, Rue du Pré-Bouvier, 1242 Satigny, Geneva,  
Switzerland

Tel: +41 (0)22 33 99 578

Fax: +41 (0)22 33 99 631

Email: [ebacehotels@mci-group.com](mailto:ebacehotels@mci-group.com)

---

## AIRCRAFT DETAILING

### AEM LOGISTICS

Tyler Harper

Tel: +1 (317) 850-6564

Email: [tharper@aemlogistics.com](mailto:tharper@aemlogistics.com)

## AIR CONDITIONING & GPUs

### AEM INTERNATIONAL

Ulrich Koch

Tel: +1 (514) 695-1331

Email: [ukoch@aeminternational.com](mailto:ukoch@aeminternational.com)